

DIGITUS Professional Modular High Density Patch Panel, shielded

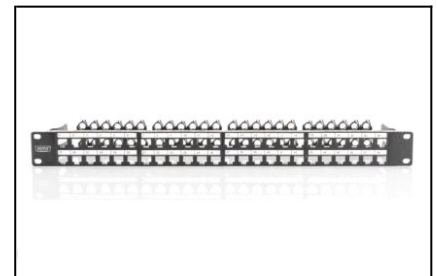
DN-91424 4016032343318



DIGITUS Modular Patch Panel, shielded
48-port, label field, 1U, rack mount, color black RAL 9005

The DIGITUS® 48 Port 1U Modular Patch Panel ensures a High Density with the benefit of 48 Keystone Jacks in just one height unit.

- 1 Layout Keystone Entry: Straight
- 1 Area of application: 483 mm (19") cabinet
- 1 Norms: ISO/IEC 11801 3rd Ed., EN 50173-1, EIA/TIA 568-C
- 1 General properties:
- 1 Suitable for 483 mm (19") cabinet mounting
- 1 Suitable for shielded Digitus® Keystone Modules and Couplers
- 1 Central ground connection
- 1 Plastic label field
- 1 Technical properties:
- 1 Housing material: 1.5 mm SPCC cold rolled steel sheet, powder-coated
- 1 Material standard: EN 10 130(1991), BS 1449, NFA 36/401, DIN 1623, UNI 5866, UNE 36-086, SIS, JIS G 3141, ASTM, SAE, NFA 36/401
- 1 Grounding bar material: Galvanized steel
- 1 Grounding wire: 18 AWG, 40 cm
- 1 Physical properties:
- 1 Operation temperature: -20° C to +70 °C (ISO/IEC 11801, EN 50173-1, ANSI/TIA/EIA 568 C)
- 1 Category: CAT 6A
- 1 Ports: 48
- 1 Color: black, RAL 9005
- 1 Units: 1



DIGITUS Professional Modular High Density Patch Panel, shielded

DN-91424 4016032343318



→ **Logistics**

	Number (pcs)	Weight (kg)	Depth (cm)	Width (cm)	Height (cm)	cm³
Packaging Unit Carton	6	4,80	55,00	38,00	17,00	35530,00
Packaging Unit Inside	1	0,80	5,00	53,00	18,00	4770,00
Packaging Unit Single	1	0,80	5,00	53,00	18,00	4770,00
Net single without Packaging	1	0,00	0,00	0,00	0,00	0,00

→ **Packaging type**

